

Stillwater

YOUR WATER ALARM

Stillwater

| | |
|-------|-------------------------------|
| 23.01 | Stillwater ½" |
| 23.02 | Stillwater ¾" |
| 23.03 | Stillwater 1" |
| 23.05 | Sensor Stillwater |
| 23.06 | Kit of two Sensors Stillwater |

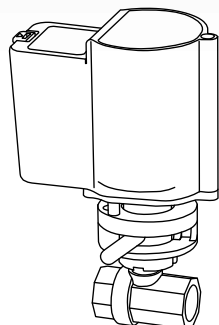


ASSEMBLY & USE INSTRUCTIONS

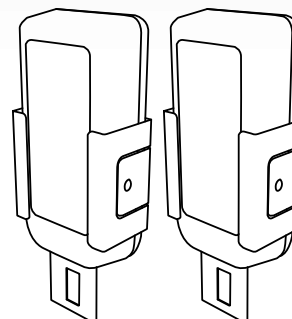
INDEX

| | |
|---|------|
| BOX CONTENT | P. 3 |
| CONTROL UNIT INSTALLATION | P. 4 |
| SENSOR INSTALLATION | P. 5 |
| ALTERNATIVE SENSOR INSTALLATION | P. 6 |
| PAIRING SENSOR TO CONTROL UNIT | P. 7 |
| UN-PAIRING SENSOR TO CONTROL UNIT | P. 8 |
| HOW IT WORKS | P. 9 |

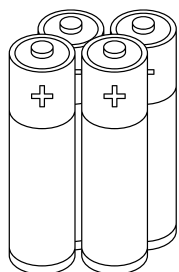
Box Content



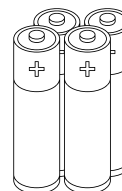
Control Unit



Sensors x2

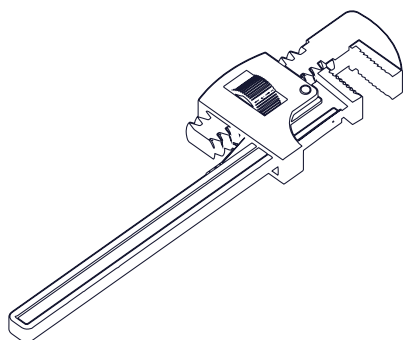


Batteries AA x4

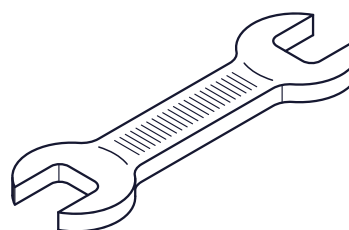


Batteries AAA x4

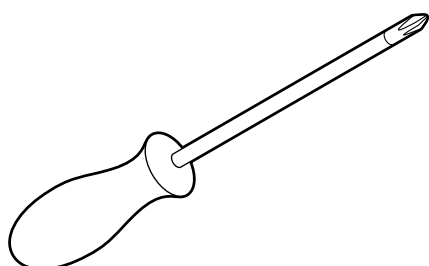
Tools you need



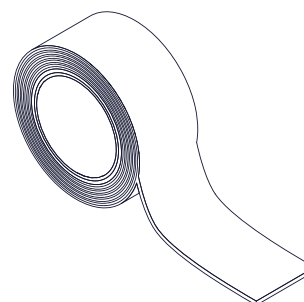
Monkey wrench



Wrench



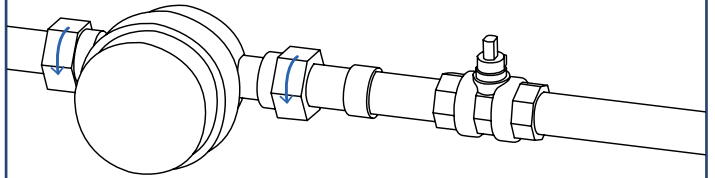
Screwdriver



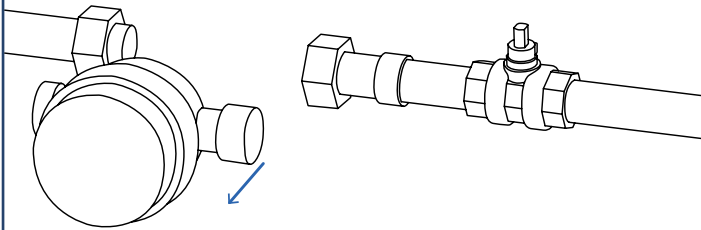
Teflon tape

Control Unit Installation

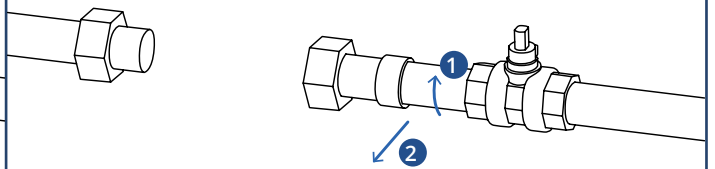
1



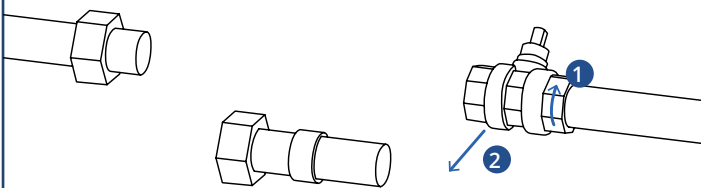
2



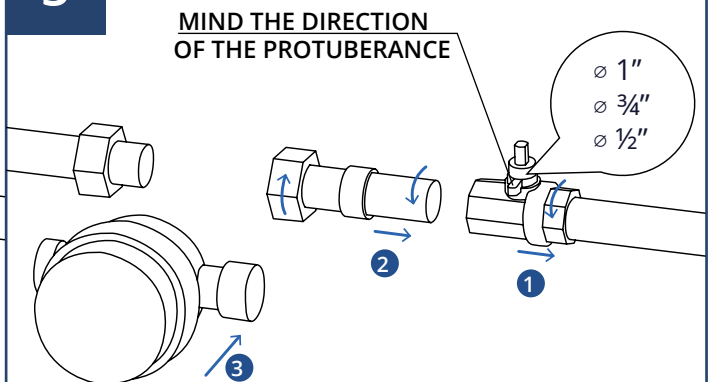
3



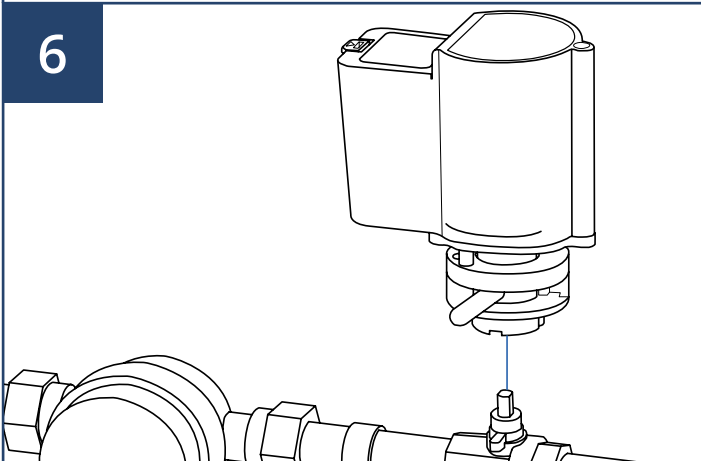
4



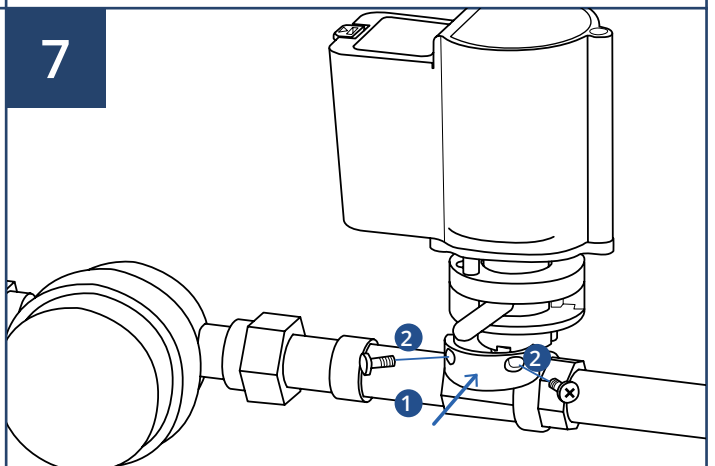
5

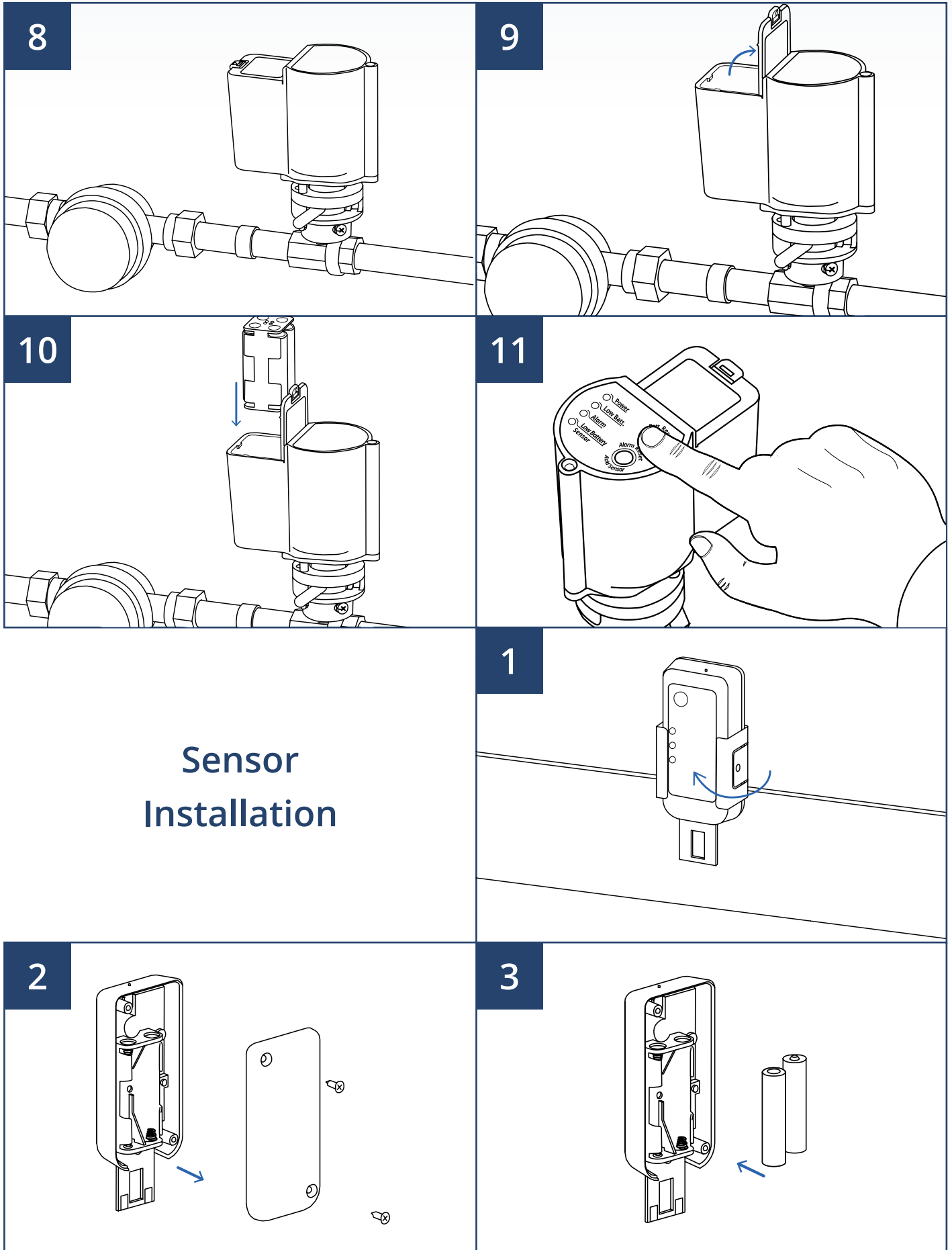


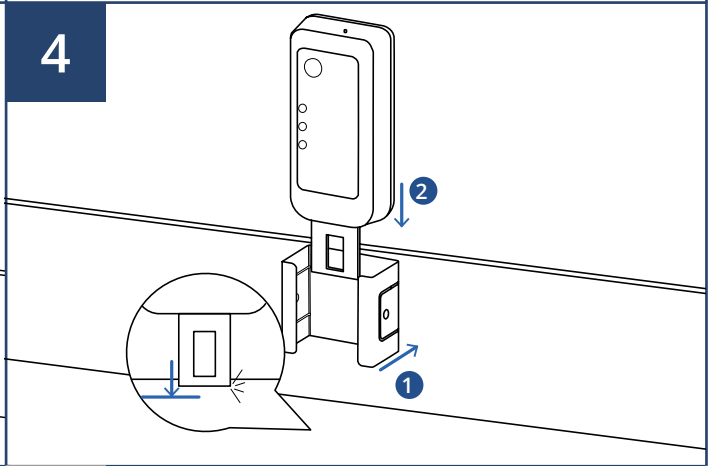
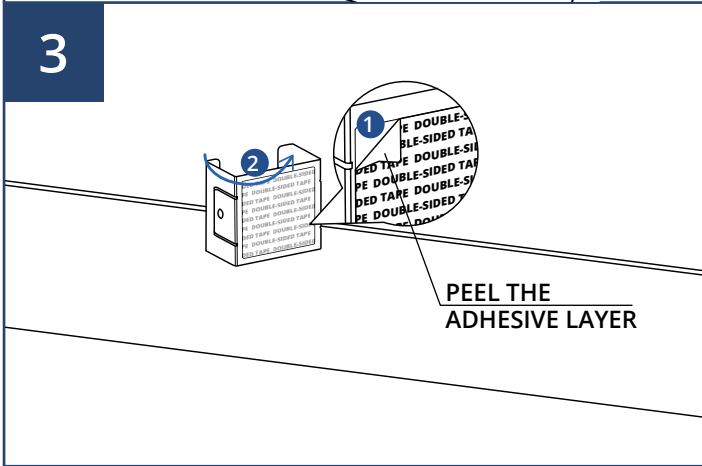
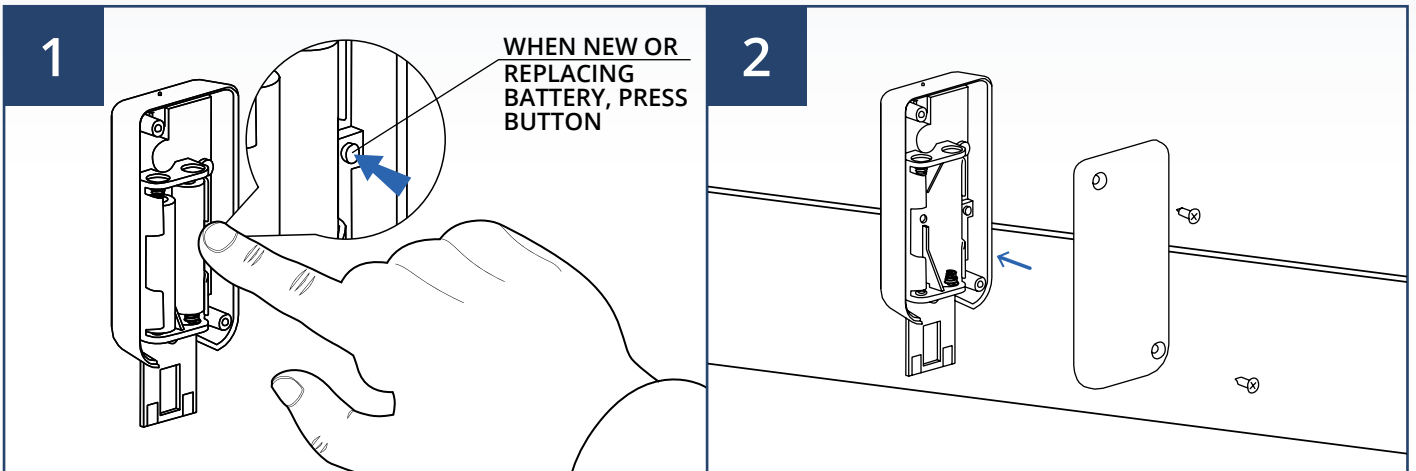
6



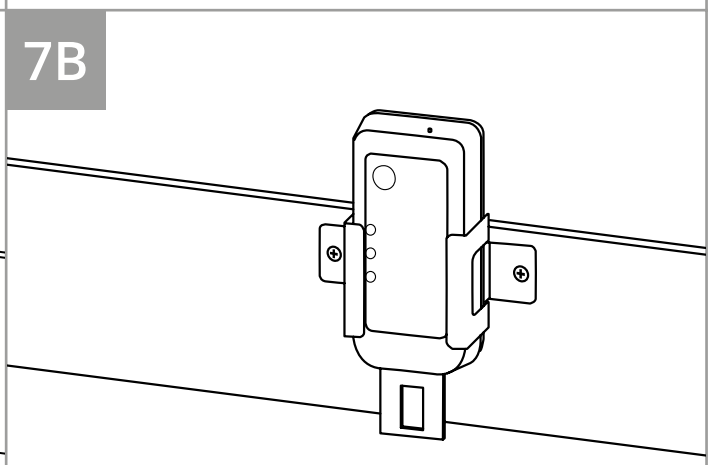
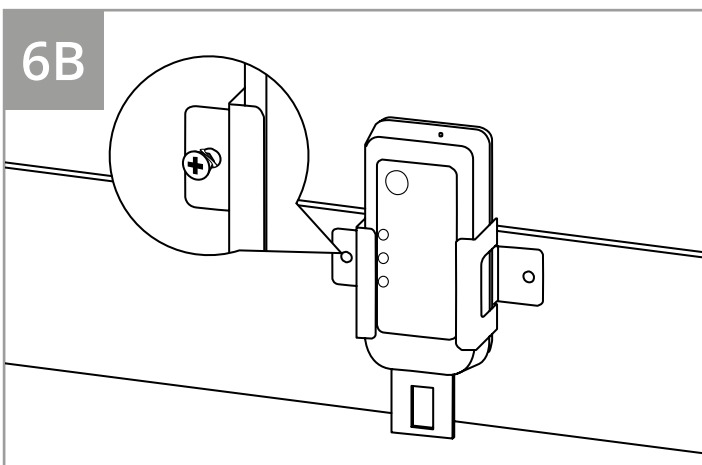
7



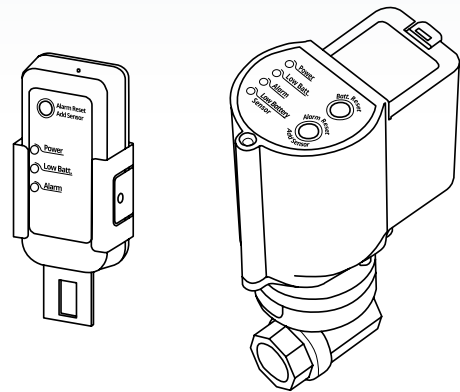
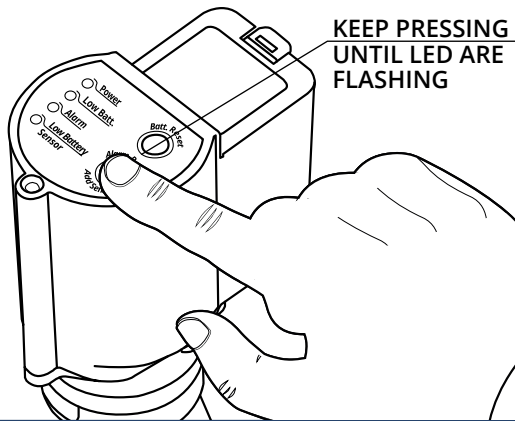
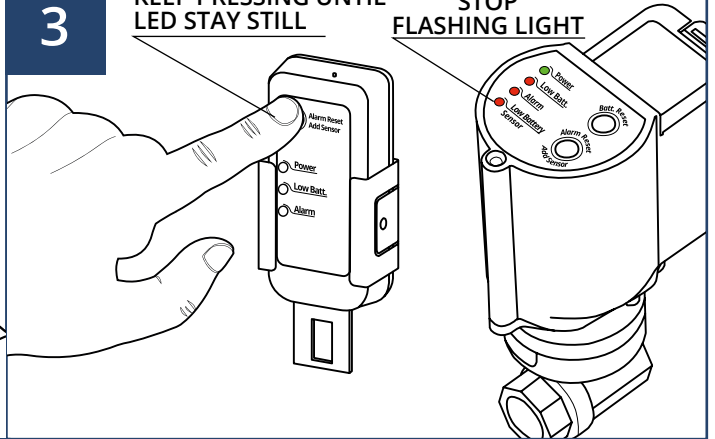
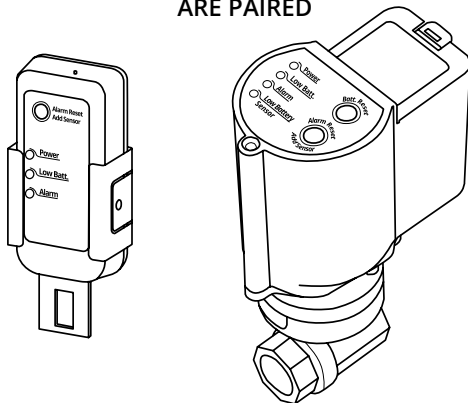




Alternative Sensor Installation



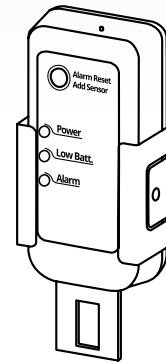
Pairing Sensor to Control Unit

1

2

3
**KEEP PRESSING UNTIL
LED STAY STILL**
**STOP
FLASHING LIGHT**

4
**SENSOR AND CONTROL UNIT
ARE PAIRED**


N.B. You can connect as many sensors as you need to maximum of 2 central units, just repeating the process

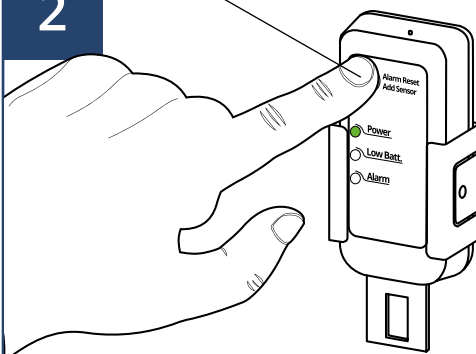
Un-Pairing Sensor to Control Unit

1



2

KEEP PRESSING



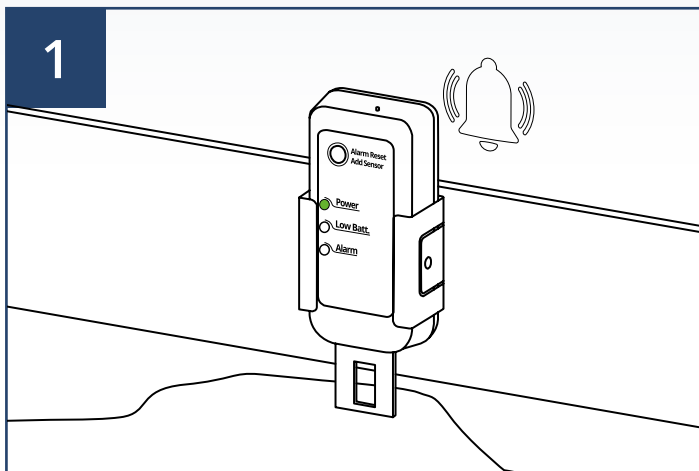
3

RELEASE WHEN ALL
LED LIGHT UP



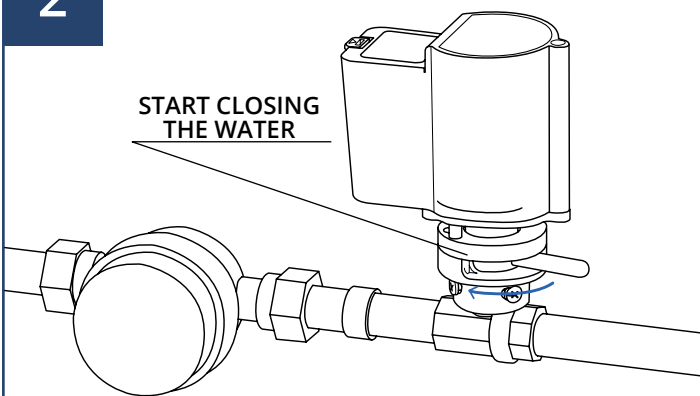
How it works

1

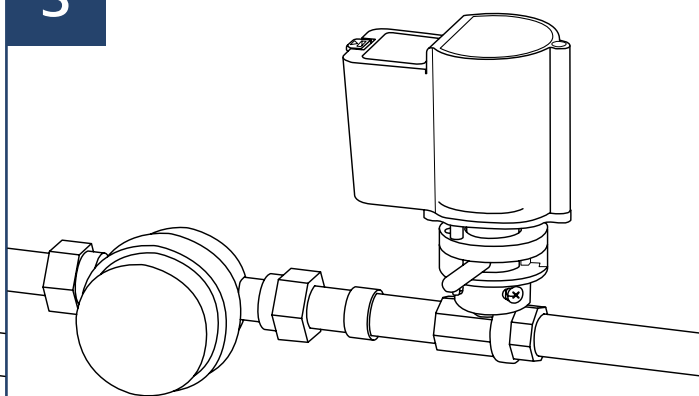


2

START CLOSING
THE WATER

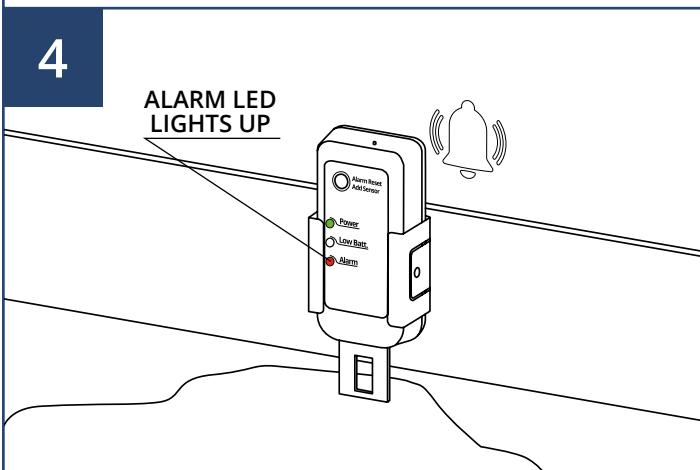


3



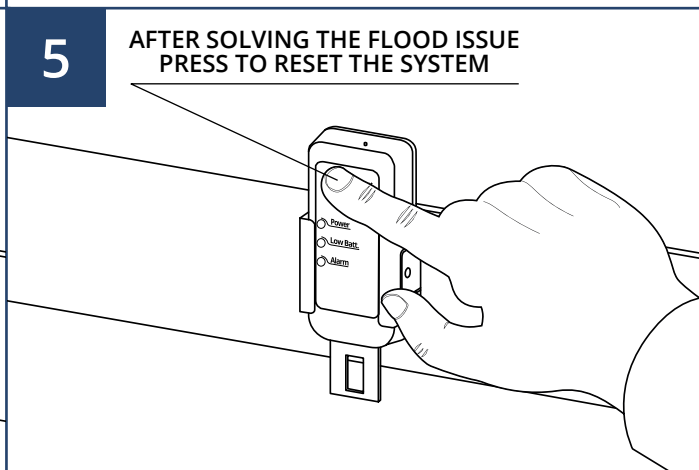
4

ALARM LED
LIGHTS UP

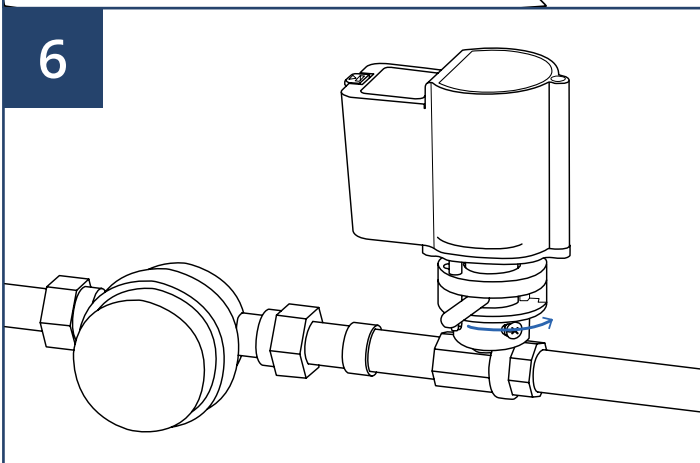


5

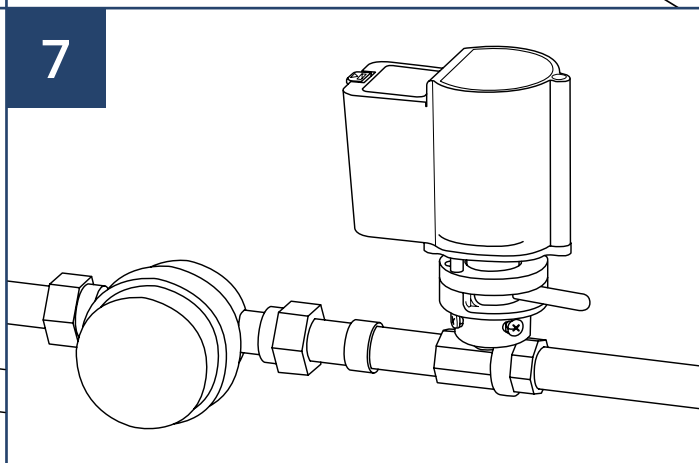
AFTER SOLVING THE FLOOD ISSUE
PRESS TO RESET THE SYSTEM



6



7





WEB & EMAIL

Email: info@itstodini.it
www.itstodini.it

TELEFONO & FAX

Telefono: + 39 06 910.52.85
Fax: + 39 06 910.06.17

INDIRIZZO

Via dei Castelli Romani, 39
00071 Pomezia (RM)