



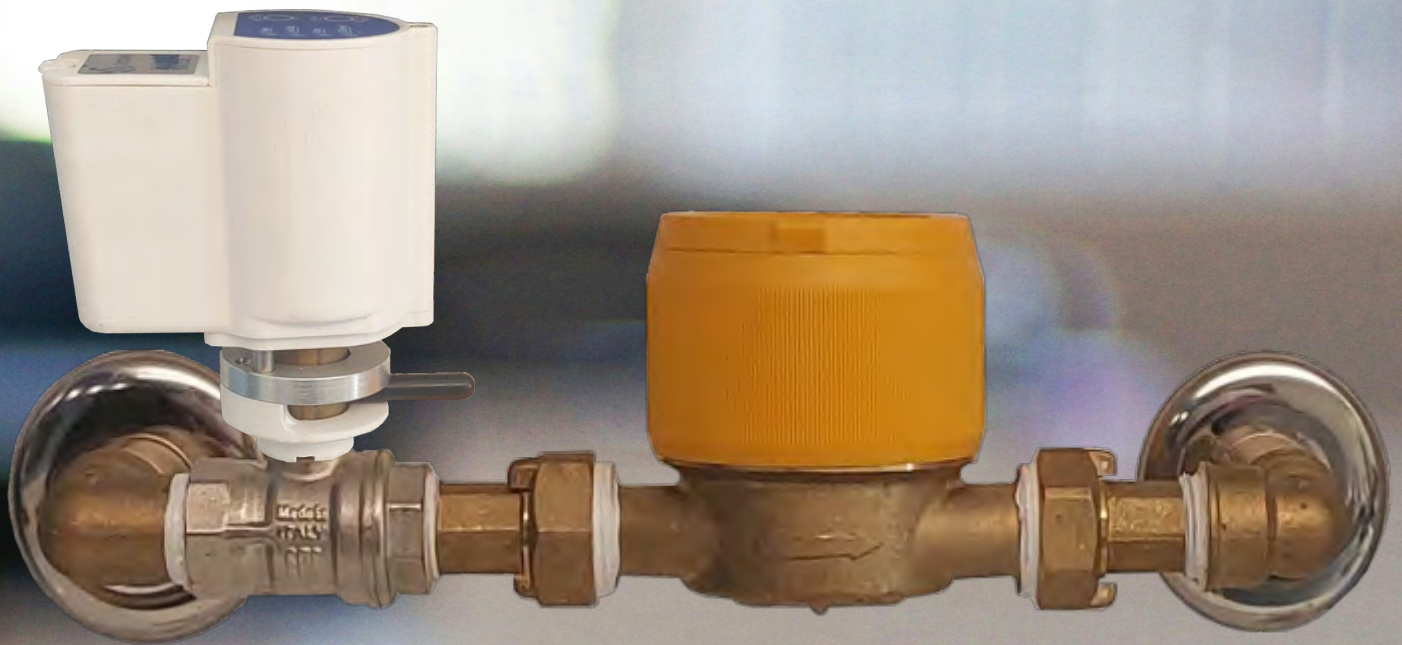
# WATER ALARM

The first anti-flooding system by ITS TODINI

EN

# STILL WATER<sup>®</sup>

*Automatic anti-flooding system*



You protect space 

Our automatic anti-flooding system is a device which stops the flow of water when it detects a leak.

The control unit immediately shuts off the main water supply valve.



ITALY



## SHUT-OFF VALVE

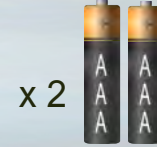
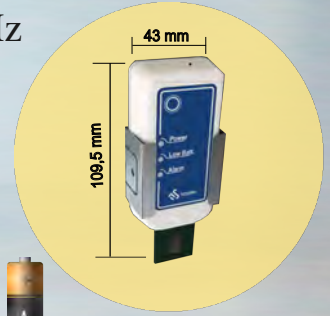


RF 868 MHz



300 MT

## SENSOR



- ✓ REDUCED DIMENSIONS
- ✓ No technical maintenance on the system required, only the installation of the closing valve.
- ✓ It is installed directly on the water stop valves in the 1/2" 3/4" and 1" sizes supplied in the basic kit.



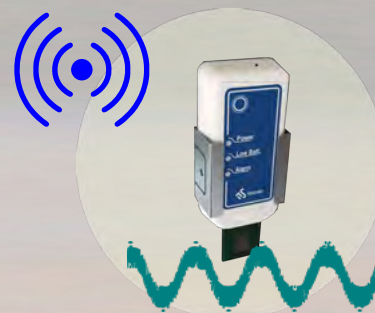
- ! Valve supplied in the kit
- ! Only possible installation with the valve supplied in the basic KIT.

- ✓ Battery life 2 years  
Response times of maximum of 40" guarantee longer battery life.



- ✓ BLOCK PROTECTION  
Automatic bimonthly activation which allows to close and open the water distribution system to prevent the stop valve from blocking due to limescale.

- ✓ Water flow reduction in case of dead batteries  
and closing of the valve after two days.



 **BLOCKAGE OF WATER FLOW IN CASE OF FLOODING**



# IT PROTECTS YOUR HOUSE AND THE WORKPLACES

STILL  
WATER®

- ✓ **SENSOR FIXING**  
The sensor can be attached with bracket to the wall with **3M** adhesive, tabs of the , bracket to fix it with screws can also be used.
- ✓ **INTERNAL SENSOR CONTACTS**  
The water sensors detectors are positioned towards the wall, to avoid accidental activation due to cleaning .
- ✓ **RELIABLE CONNECTION**  
Reliable connection of 300 meters both in heigh for villas and in width for warehouses, even in reinforced concrete .
- ✓ **COMBINABLE MOTOR AND SENSOR**  
Each sensor can be connected with multiple control units.  
Each control unit can be connected with multiple sensors.
- ✓ **MANUAL CONTROL**  
Possibility to close manually the valve for system maintenance.
- ✓ **BATTERIES REPLACEMENT**  
Batteries replacement red LED signal.  
In case batteries are not replaced the system **REDUCES** the flow of water until the valve is entirely **CLOSED**, avoiding a possible flooding in the absence of charged and functioning batteries.
- ! **IP 20**  
Only in case of **OUTDOOR INSTALLATION**, it is recommended to keep the device protected from atmospheric agents.

